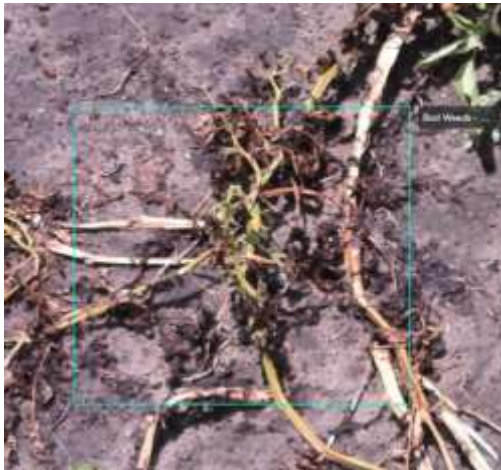


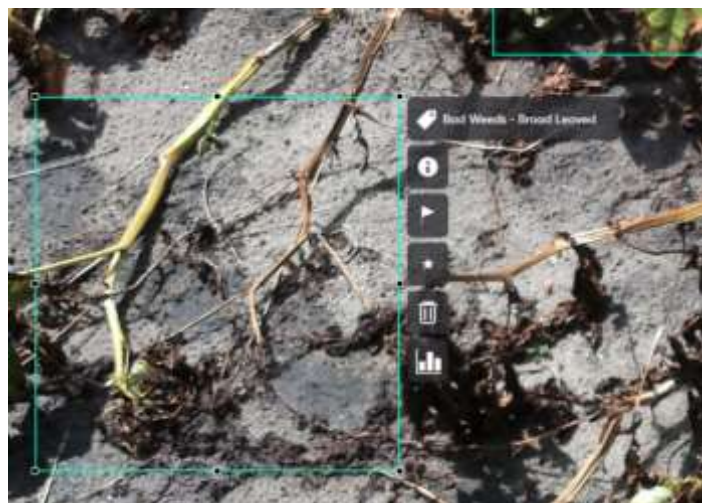
End of Season Weeds

1. Scene - leftovers of potato dead stems and tubers - If not, then irrelevant
2. Identify carefully potato (delete) or weed (approve)
3. Identify if the weed is 1 or a few for separation.
 - If 1 - approve single bb and delete the rest
 - If more than 1 or nor sure - approve all bb
4. Dry/alive weed

Common false tags - Delete



Delete - Common false tags



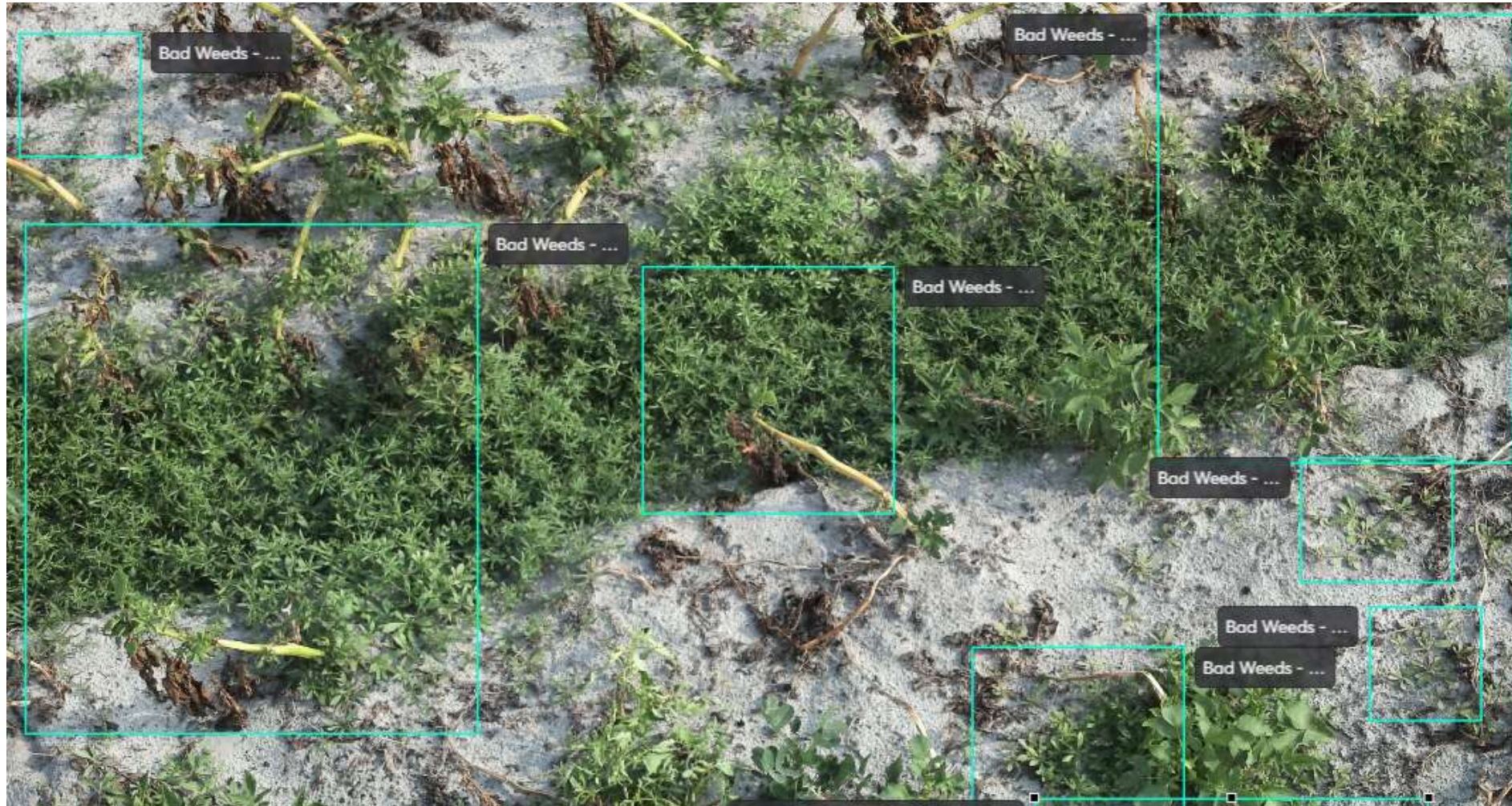
Approve

small weed inside big BB

few small weeds inside big BB.



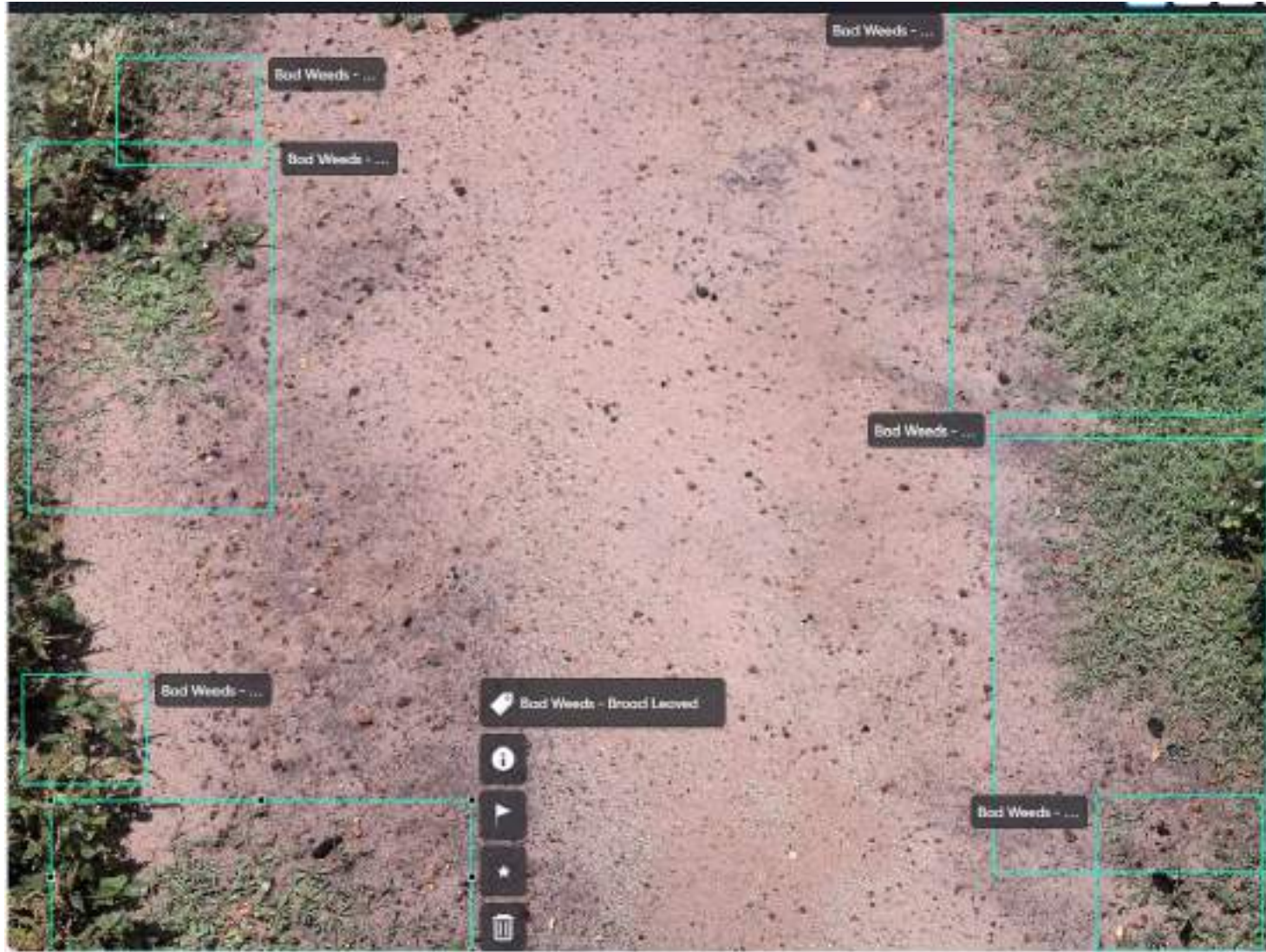
Approve



Approve



Irrelevant? Yes..



- One big weed tagged with few BB

- Is it 1 plant for sure ?

Yes - Approve 1 and delete the rest

No - Approve all tags

Left central one - you can separate



- One big weed tagged with few BB
- **Is it 1 plant for sure ?**

Yes - Approve 1 and delete the rest

No - Approve all tags

Here – approve all



Approve all



Approve all



Irrelevant - no clue for potato in the scene

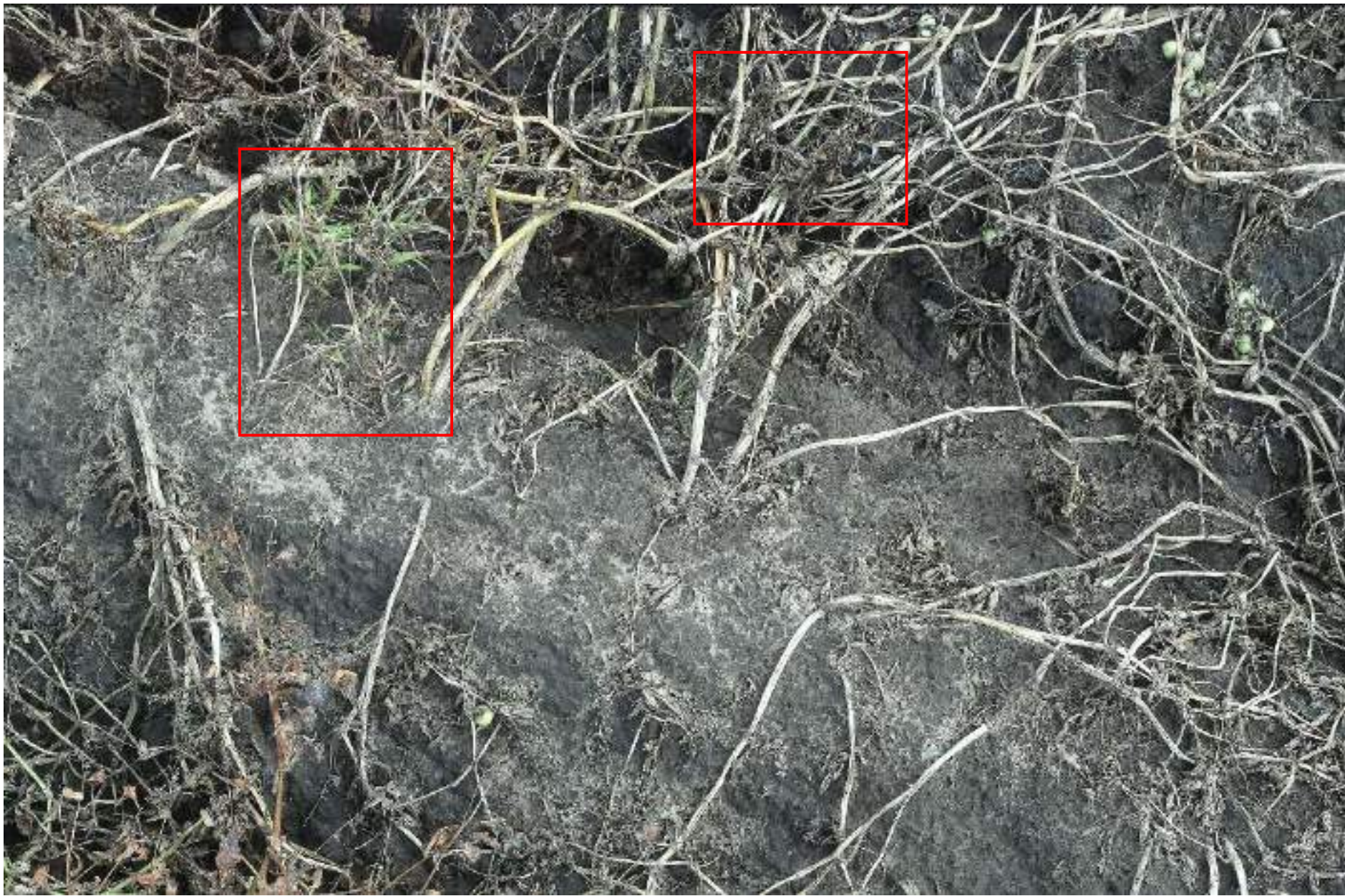


??

Dry weeds ?

Alive?







Good broad