

WORKSHOP 9

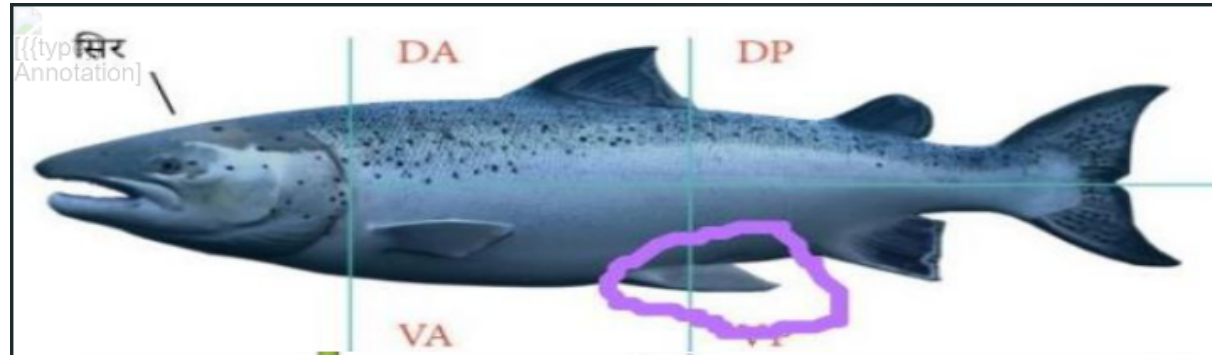
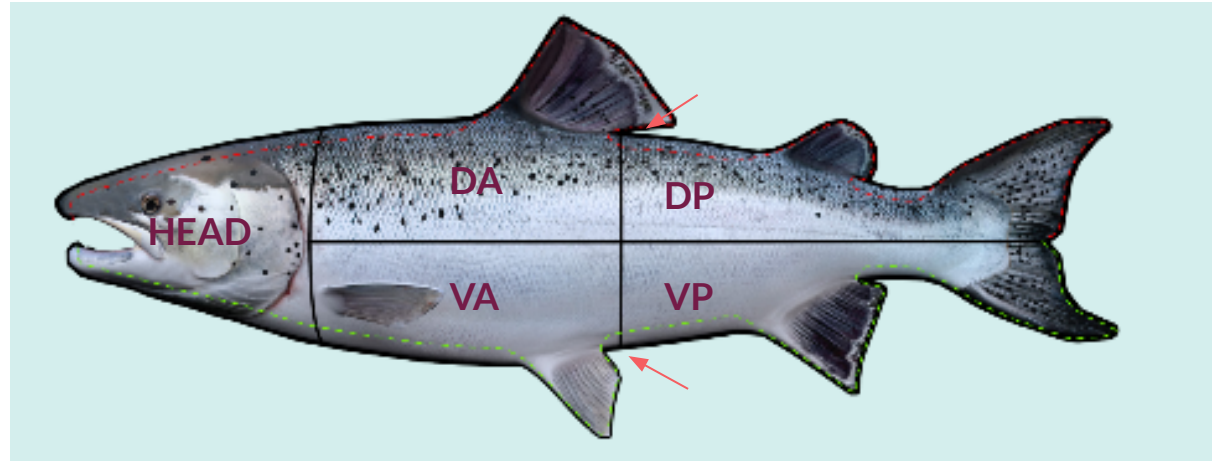
By Carolien Strating-Gullaksen
HQA Norway

Q & A section

Questions send by Cogito

QA Body section

- Head
 - Straight line following the gill
- Anterior
 - Straight between the back of the fins



QA Lice

This is a smudge, dirt on the cheek of the fish.

It is not a lice

- Color is off
- No lice shape/outline



QA Lice

Some lice are visible

Some lice are not

So section is not good enough → so not a visible body section



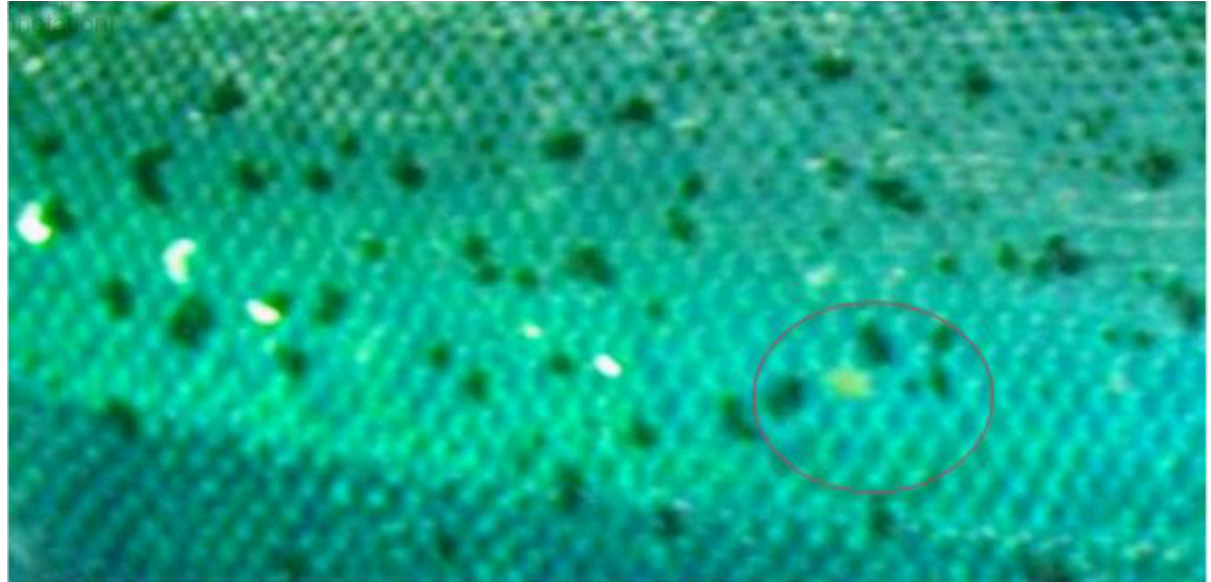
QA Lice

Too blurry (as screenshot)

Maybe in LATI quality is better

Look for:

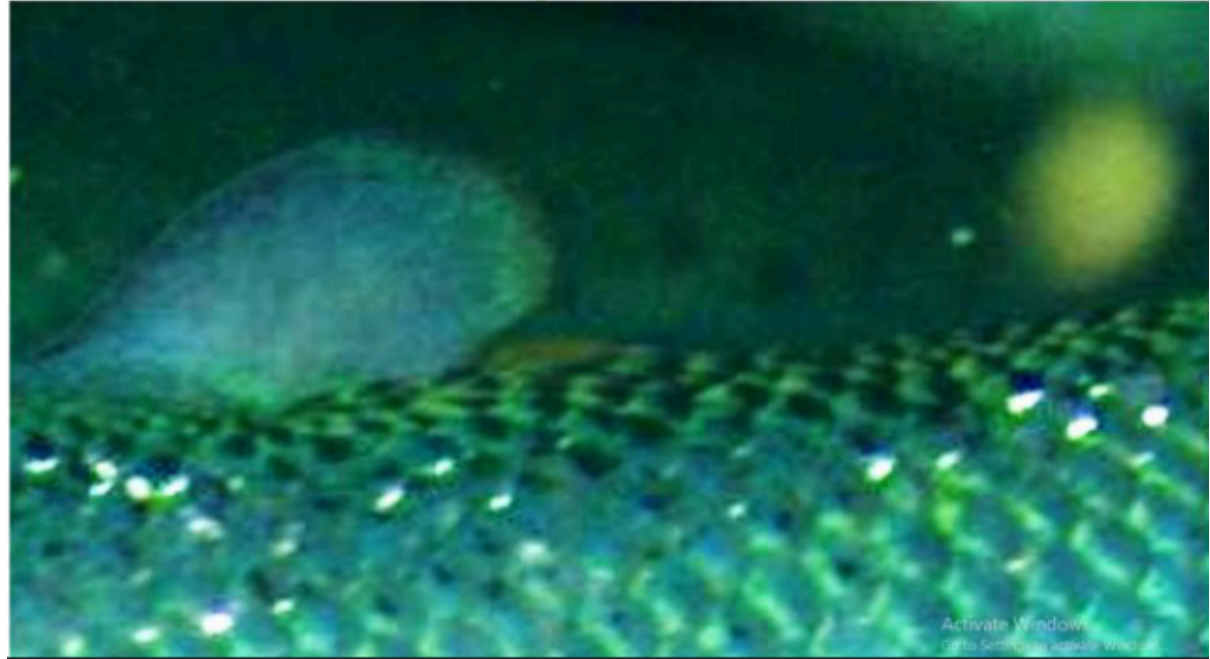
- Shape/outline
- Head shape
- Egg string (long or short)



QA Lice

Too blurry

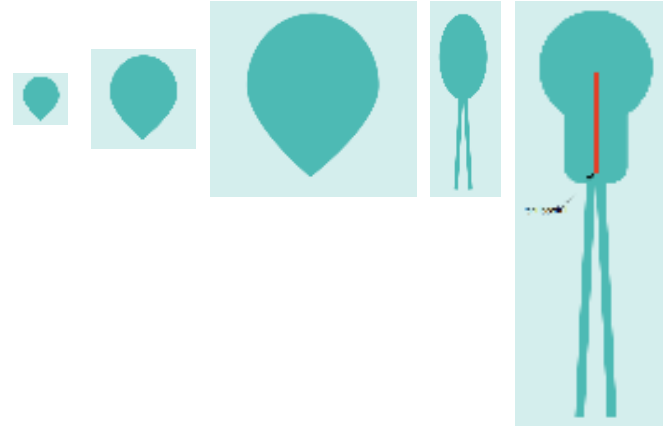
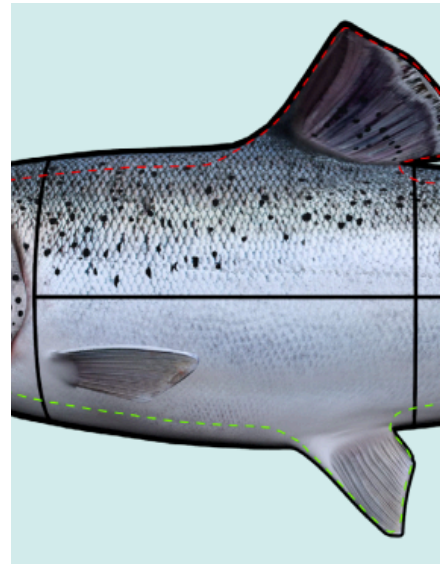
Won't be able to see if it is a big moving
or Adult Female



Always be able to defend
your annotation

To defend your annotation

- Be consistent
- Have reasons for accepting a section
 - This section is same quality as other section that has lice
 - Lice are visible than you can accept both sections
 - Lice are not visible than you have to reject both sections
- Shape/Outline
- Egg strings
- Shape of head



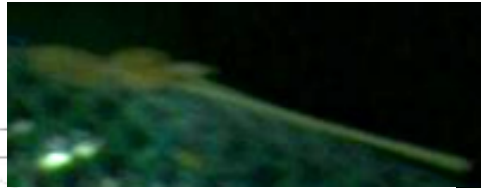
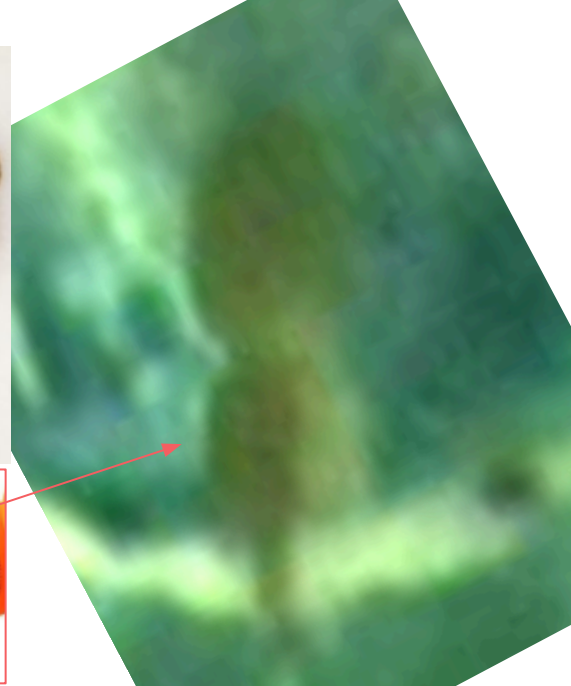
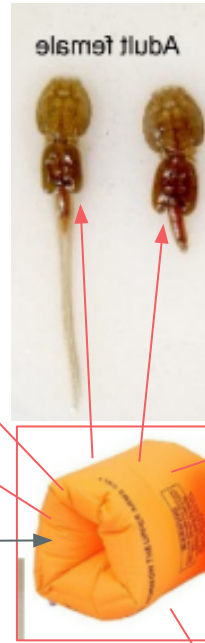
A red square with a white border, containing the word "WORKSHOP" in white, bold, uppercase letters centered within the square.

WORKSHOP

Adult female

Adult female markers:

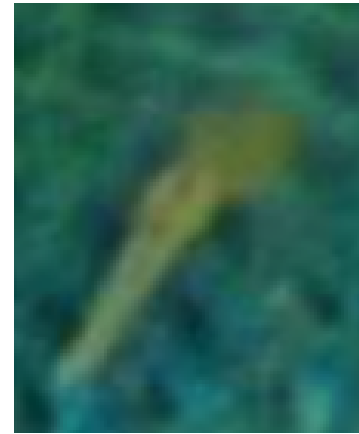
- Round head
- 2 segments
- Bloodline
- Second segment is U shaped and looks “inflated” like “swimming bands”
- Seen with & without egg strings
 - Flowing



Scottish adult female

Scottish adult female markers:

- Oval head
- small , compact often not visible second segment
- Thick stiff egg strings
- Look at how body “acts”
 - Stiff
 - Stick
 - Stiff curve

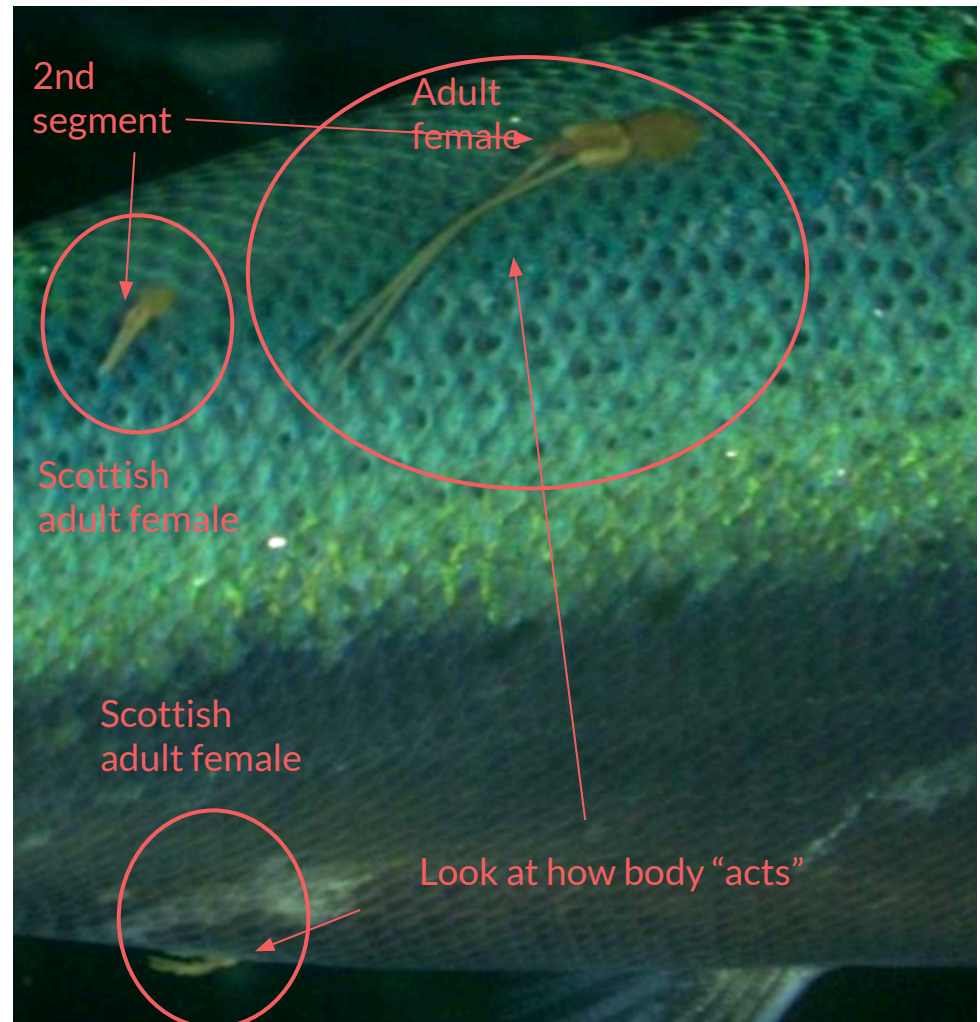


Look at proportions

Adult female vs Scottish adult female

- Look at how body “acts”
- Scottish adult female is much smaller

Adult female	Scottish adult female
<ul style="list-style-type: none">- Flexible- Flowing- “Swimming bands” 2nd segment- Big round head	<ul style="list-style-type: none">- Stiff- Stick- Very small or not visible 2nd segment- Oval head



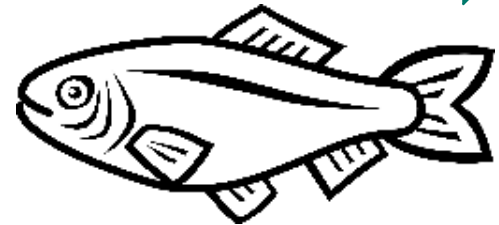
Small vs big fish

Small fish	Big fish
<ul style="list-style-type: none">- Round head- Weight- Body shape	<ul style="list-style-type: none">- Triangle head- Weigh- Body shape

50g

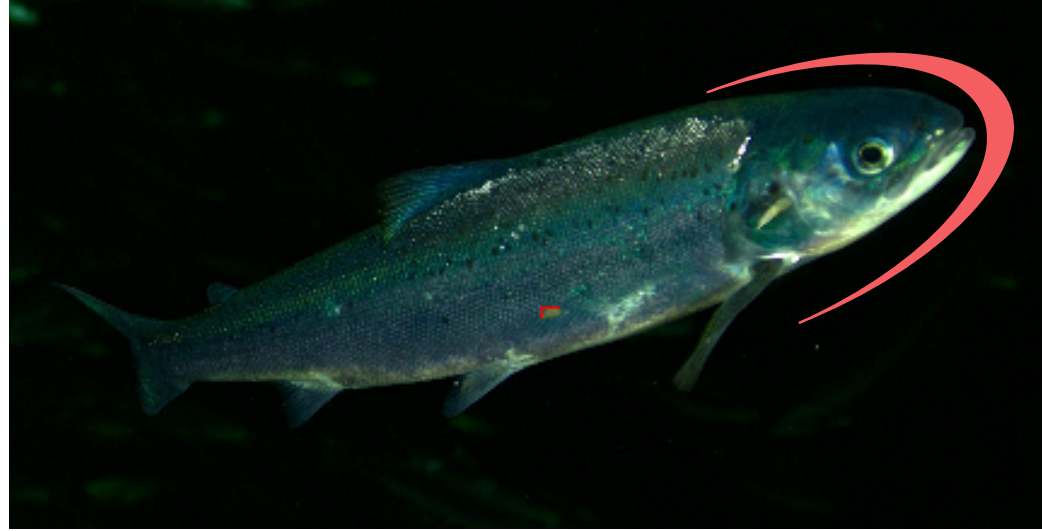
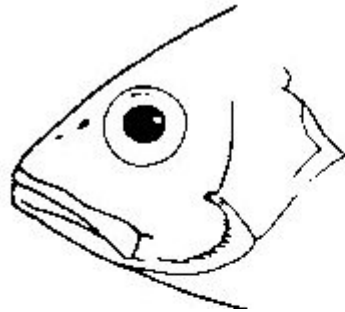


5000g



Small vs big fish

- Head shape
 - Round = small fish
 - Pointy = Big fish

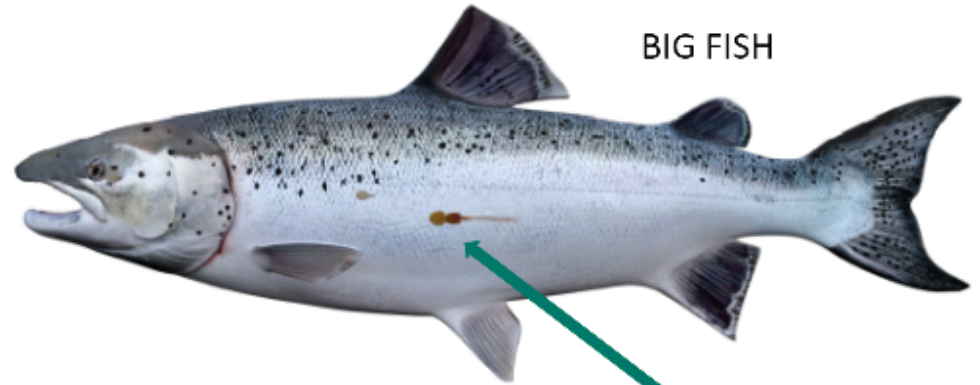


Small fish vs Big fish

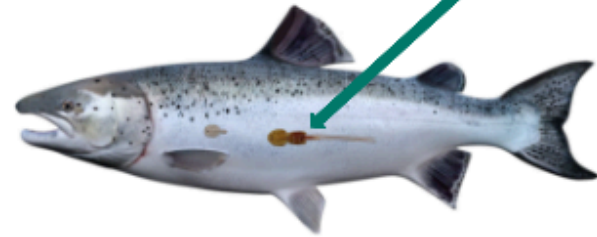
Fish can be very small and very big

- Scale → cm

Lice scale → mm



BIG FISH



SMALL FISH

Same size lice -
Two different
sized fish

Thank you

See you next time